

1  $\mu$ m  
|  
|

Mag = 12.00 K X

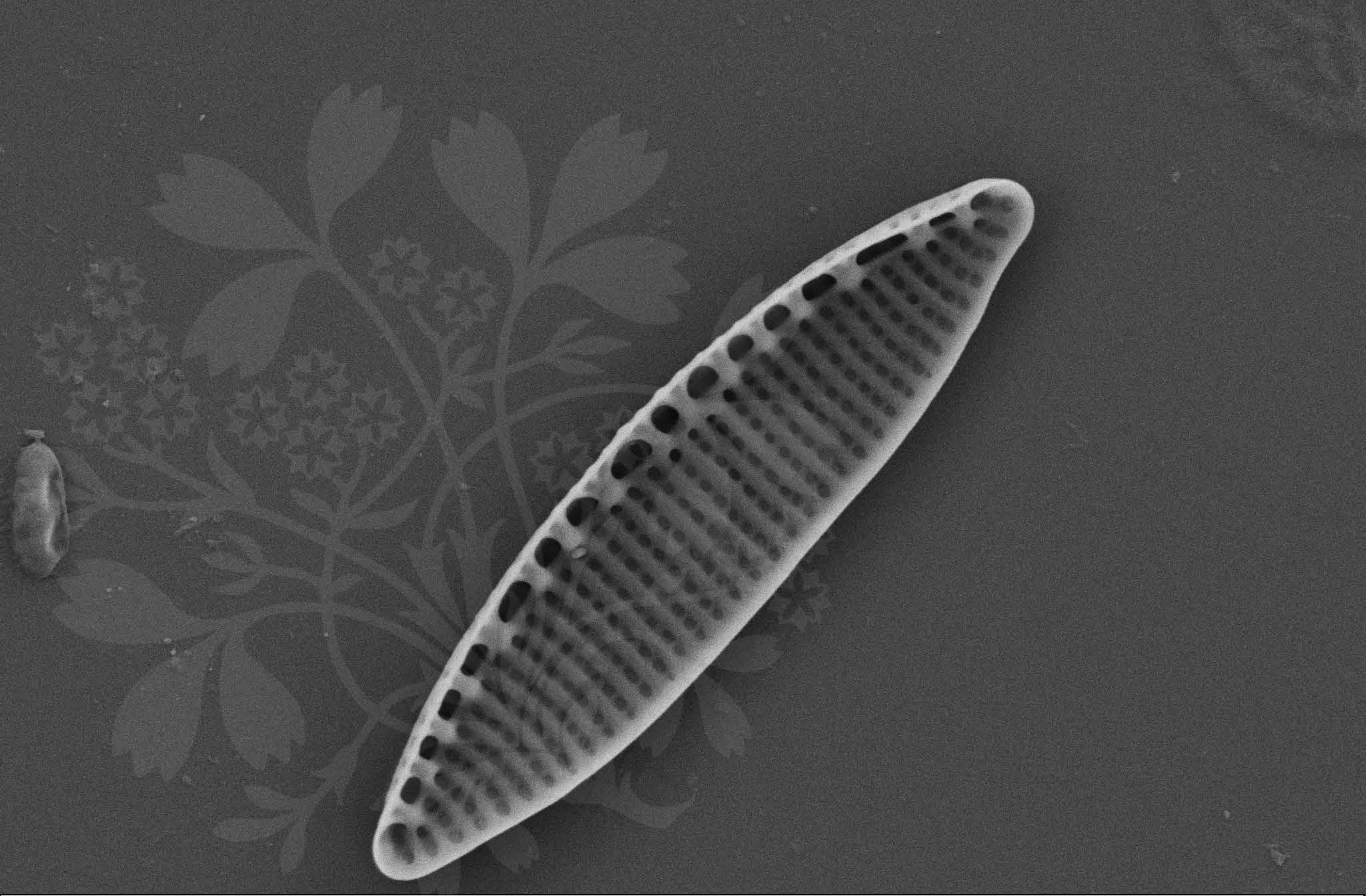
WD = 4 mm

EHT = 5.00 kV Signal A = SE2

File Name = 01-L61.tif

Date :8 Aug 2011





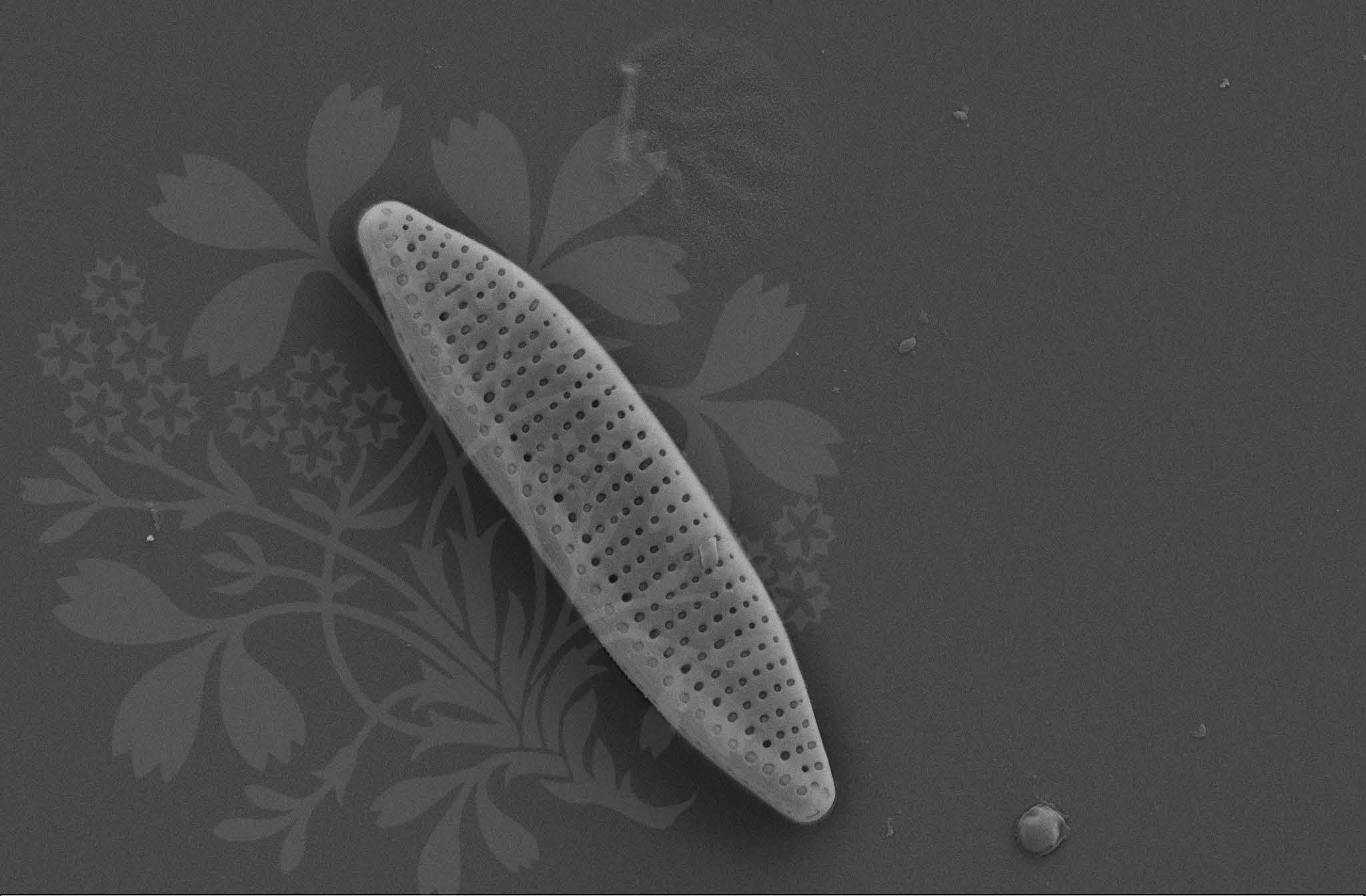
1  $\mu$ m

Mag = 18.50 K X  
WD = 4 mm

EHT = 5.00 kV Signal A = SE2  
File Name = 02-L61.tif

Date :8 Aug 2011





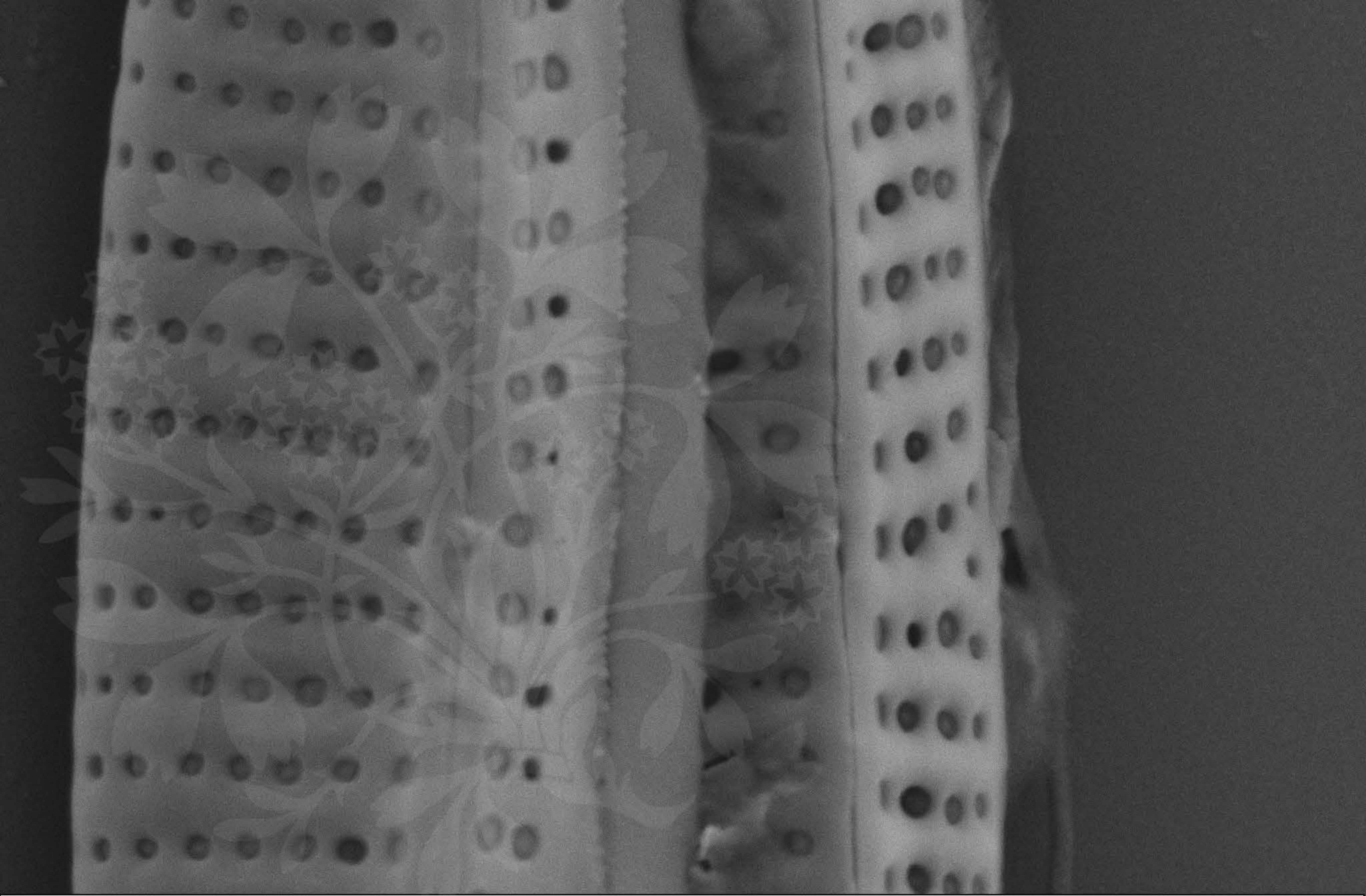
1  $\mu$ m  
|-----|

Mag = 16.00 K X  
WD = 4 mm

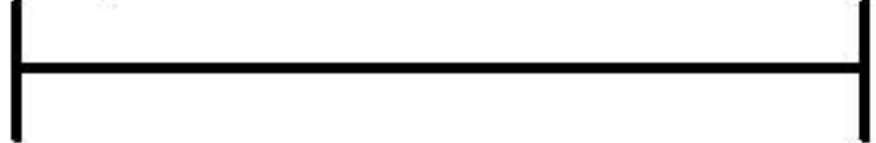
EHT = 5.00 kV Signal A = SE2  
File Name = 04-L61.tif

Date :8 Aug 2011





1  $\mu$ m



Mag = 55.50 K X

WD = 4 mm

EHT = 5.00 kV Signal A = SE2

File Name = 03-L61.tif

Date :8 Aug 2011

